

# GRAND CHÂTELLERAULT L'ESPACE D'UNE VIE\*



GRAND  
CHÂTELLERAULT

COMMUNAUTÉ  
D'AGGLOMÉRATION

\* *The place of a lifetime*





Gateway to the Northern part of the Nouvelle-Aquitaine region, halfway between Paris and Bordeaux, Grand Châtelleraut offers a desirable quality of life. Encompasses 47 boroughs set in the greenbelt of the Vienne. Gathered around an urban centre, the territory combines nature and state-of-the-art industry, sports and heritage, culture and good living within a people-friendly territory focused on the future.



	Paris	3h
	Bordeaux	3h
	Poitiers	30 min.
	Tours	40 min.
	La Rochelle	1h40
	Nantes	2h15
	Bordeaux	1h47
	Lille	3h56
	Paris	1h19
	Poitiers	Tours
	La Rochelle	

You will love this territory where you can take time to enjoy life.

A place where you will build the family life of your dreams.

A place where you will invent tomorrow without forgetting the present.

A place where you can build a future respectful of the land  
and of the people who take care of it.

# GRAND CHÂTELLERAULT

## L'ESPACE D'UNE VIE\*

\* *The place of a lifetime*

A PLACE TO LIVE

P. 6 to 17



A PLACE TO RESPECT

P. 18 to 25



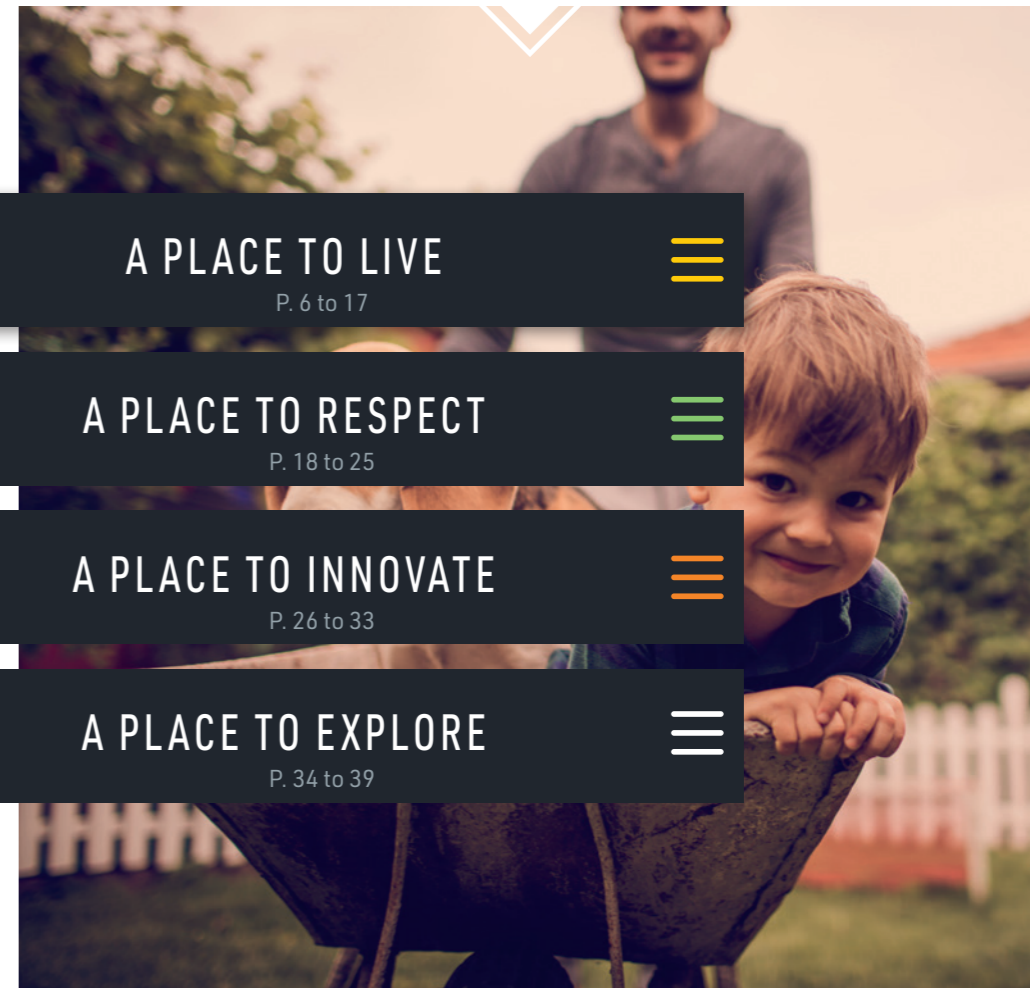
A PLACE TO INNOVATE

P. 26 to 33



A PLACE TO EXPLORE

P. 34 to 39





# A PLACE TO LIVE

# ” A human-focused, family-friendly territory

From Angles-sur-l'Anglin to La Roche-Posay and from Port-de-Piles to Bellefonds, Grand Châtelleraut offers all the key aspects of a high quality of life, to guarantee the well-being of children and parents. The territory is close to nature, authentic, humble and friendly providing a strong public service and high-level of culture. Offering a rich associative life and a natural heritage which spreads all the way to the heart of the town centre.




**12**  
nurseries and  
various care  
structures


**471**  
childminders




**1,200**  
associations




**700 km**  
of signposted  
walking trails



**80**  
school facilities

67 primary schools  
8 secondary schools  
4 high schools  
2 technical colleges  
1 technological  
university institute



# Find your dream home



PARIS

20 sqm

for the purchase of a flat \*



BORDEAUX

43 sqm

for the purchase of a flat \*



TOURS

67 sqm

for the purchase of a house  
or of a 56 sqm flat\*



CHÂTELLERAULT

150 sqm

For the purchase of a house  
with a garden \*



Whether you are looking for a home in town or in the country, with a garden or overlooking the river, to keep chickens or build a swimming pool...

Here, the property of your dreams can become a reality thanks to extremely competitive average prices per sqm!

\* Average investment of 200,000 €

## Family

From primary school to advanced studies, Grand Châtellerault takes care of your children, providing them with the support they need to grow up, learn, thrive and exercise. So that each family can find its place.



## Health

Grand Châtellerault offers a dense network of local healthcare, structured around the ultra-modern hospital centre, a private clinic, and world-renowned thermal baths.

## Community life

Major contributors to the well-being of everyone, 1,200 associations take actions to provide support to all, whether they pursue a sporting, cultural, environmental, economic or charitable mission.



## On foot

Between moors, cliffs, and forests, it is on foot that one can fully experience the diversity of landscapes found throughout the territory of Grand Châtelleraut. From the Saint-Jacques-de-Compostelle trail to the one that leads from La Roche-Posay to the Atlantic Ocean, 150 trails are available to walkers whether for a gentle stroll with friends or a more challenging hike.



## On bicycle

The Grand Châtelleraut inhabitants choose eco-friendly mobility options to go to work, do their shopping at the market, take their children to school, or simply enjoy the sun. With 27 km of bicycle path - and soon to be twice as many - there is a route for everyone.

## By boat

From the town centre crossed by the Vienne River to the steep valleys of Anglin and Creuse, not to mention lakes, ponds, and pools dotted around the territory, water is omnipresent throughout the landscapes. To admire it : by canoe, paddle, or even in a "toue cabanée" (a traditional fishing boat equipped with a hut used on the Loire River).



# In Grand Châtelleraut, culture is everywhere!



### TO PRACTICE

- The Clément Janequin Conservatory of music, dance, and drama of Châtelleraut and the Conservatory of Lençloître
- School of Arts
- National Circus School
- Associations of cultural practices

### TO LEARN

- A network of 13 libraries
- Art library
- Game library

### TO EXPLORE

- Grand Atelier, museum of Art and Industry
- "Châtelleraut 3T-Scène conventionnée" Theatre Hall
- Contemporary art centre
- 4 cinemas including 2 certified arthouse cinemas

### FESTIVALS

#### Circus Arts

- Les Insoucians

#### Living Culture

- Les Folies Bastringue

#### Tales

- Les Mardis au Verger
- Les Cent Voix

#### Jazz

- Jazzelleraut

#### Classical music

- Automne Musical
- Aux Ormes Mozartiens
- Les vacances de M. Haydn

### SUMMER EVENT

- Les Bistrots Guinguettes
- Jours de Vienne...



# Sports activities



**269**  
associations  
and sports clubs

**1** ice rink

**1** aquatics centre

**5** swimming pools

**5** skateparks

**14** sports complexes

**16** gymnasiums

**91** stadiums (football or rugby)

**3** canoeing-kayaking clubs

**9** dojos

**71** tennis courts

**3** moto-cross tracks

**2** shooting ranges

**Rowing, fencing, boxing,  
rock climbing, archery,  
skateboarding, yoga,  
ice skating, paddle  
boarding...**

Thanks to quality infrastructure and active associations, you can learn and participate in almost all sports.

## ...and other leisure activities

The Petites Minaudières Park, the casino and the Roche-Posay racecourse, Saint-Cyr Lake and golf course, treetop climbing, paintball, hot-air balloon, and a lot more ...





# Proximity is paramount

## A dynamic at the heart of local communities

In times when large retail chains are standardising the town centres of urban areas, Grand Châtelleraut has independence and proximity in its favour. The heart of the town beats thanks to shops with stylish character, gathered around a gourmet market hall. And local businesses ensure the vitality of the surrounding towns.



Support your territory, **BUY LOCAL!**



**Here**, we have been consuming locally for a long time. Producers from nearby areas supply markets, restaurants. And food stores; because the inhabitants cultivate pride in their land.

## Value for money



2€14  
Paris

1€72  
Bordeaux

1€45  
Châtelleraut



4€  
Paris

3€34  
Bordeaux

2€91  
Châtelleraut



13€  
Paris

10€40  
Bordeaux

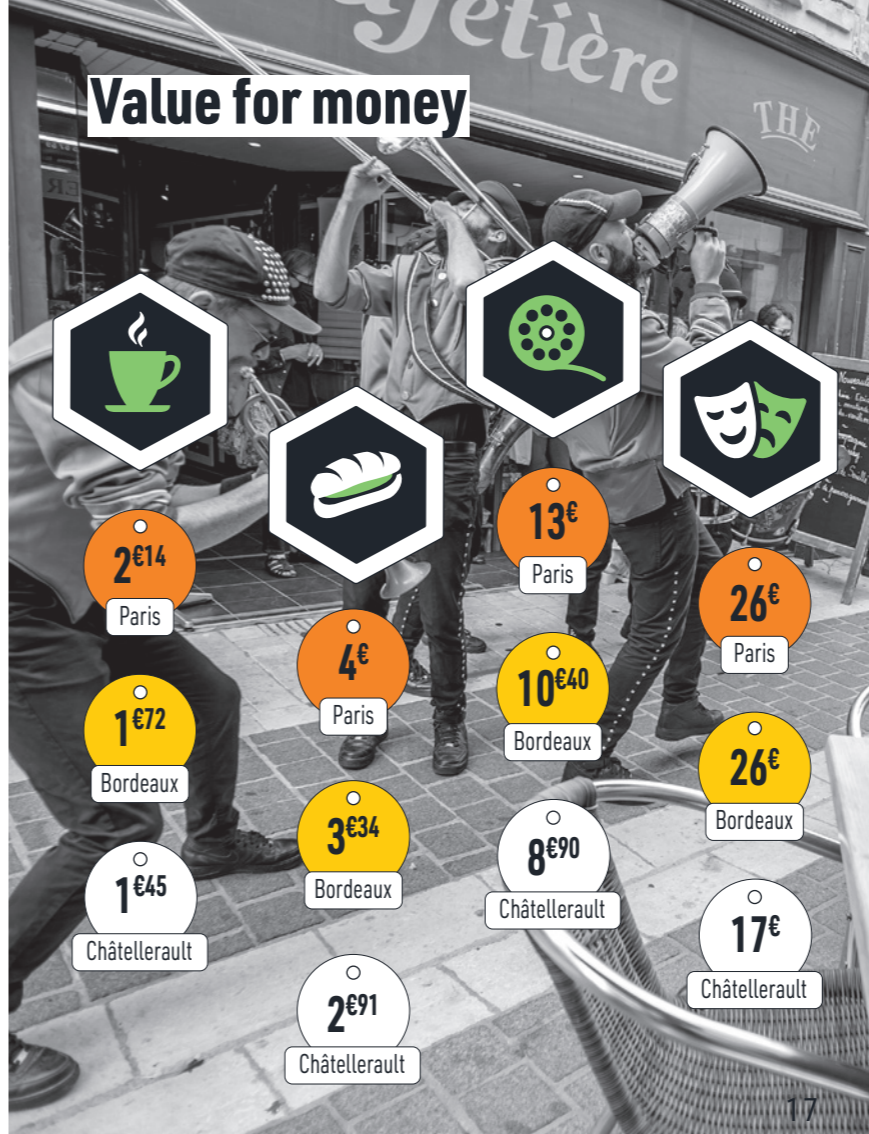
8€90  
Châtelleraut



26€  
Paris

26€  
Bordeaux

17€  
Châtelleraut



## The "Action Cœur de Ville" programme

The objective of the "Action Cœur de Ville" programme is to boost the attractiveness of the town centre and those surrounding, in line with the vibrant and flourishing lifestyles of the community. To achieve this, Grand Châtelleraut reviews all the factors of attractiveness, from home improvement to entertainment.





# A PLACE TO RESPECT

# Bring nature to the heart of the town



**Vienne, Creuse, Gartempe, Anglin, Envigne...**

With limestone, clay, slate and tile, Grand Châtellerault showcases its diversity at the heart of a preserved natural heritage. Between flowing rivers, picturesque valleys, hundred-year-old forests, steep cliffs, and plains that are sources of rich wildlife.





# Towards an **energy and ecology** transition for all

How can we limit the impact of human activities on the environment and preserve the quality of life of our territory sustainably?

The energy transition is a global issue, and is also a priority for the territory, which relies on a collective effort to reduce our carbon footprint.

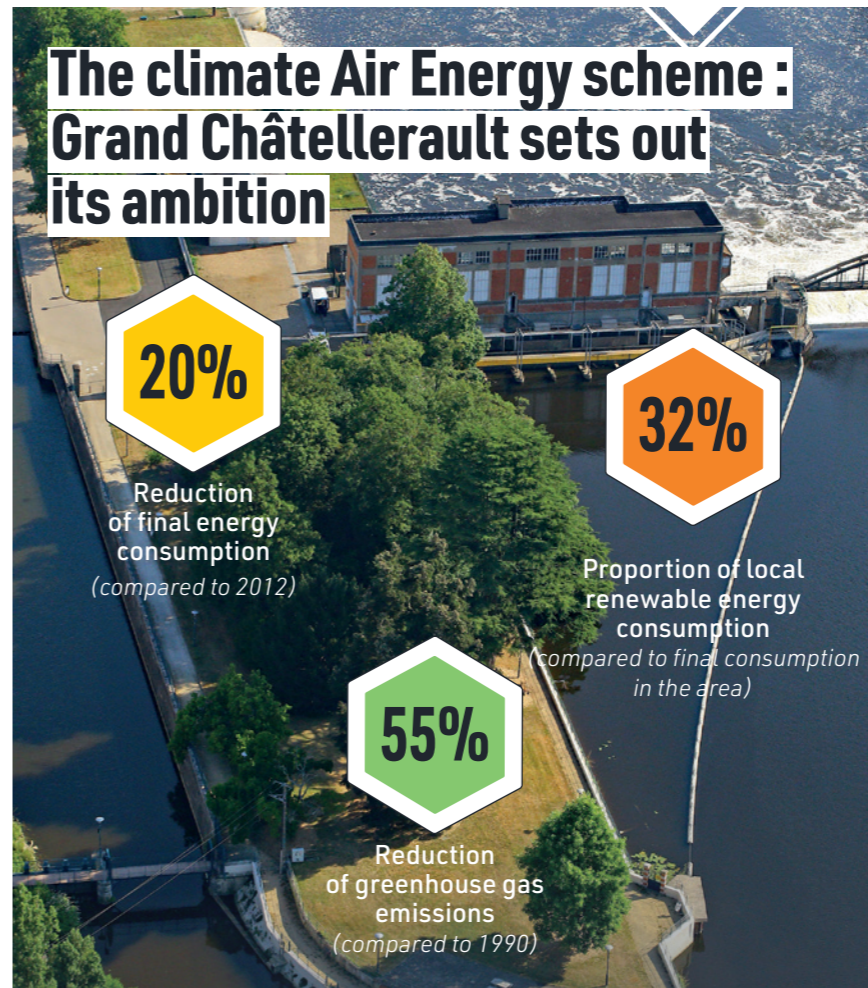
At the heart of the strategy, the pooling of skills allows all boroughs to benefit from a tailored support to develop a controlled energy policy and take informer actions on their heritage with the help of a specialised technician.



## Housing and energy-efficiency improvement

### HOW CAN WE HELP YOU REDUCE YOUR ENERGY BILL ?

A dedicated team supports homeowners to successfully carry out renovation projects. They are informed, advised, and financially assisted from the creation of their application form to the completion of the works.



## An innovative approach

A dam and a hydroelectric plant in the town centre, development of five solar power plants, including two on urban wastelands. The implementation of a solar land registry to allow individuals to estimate the feasibility and profitability of a solar energy project. A methanization plant in Ingrandes-sur-Vienne, wind farms, and heating networks in the Plaine d'Ozon. Grand Châtelleraut is multiplying initiatives to promote energy efficiency while investing in local production of renewable energy.

## The Pinail nature reserve

The Pinail Nature Reserve is known for its exceptional fauna, flora, and fungi that it houses, and its origins can be traced back to human activity. Its numerous ponds are the result of millstone extraction, which can be dated back to before the year 1000. Today, 2,500 species of animals, plants, and fungi find refuge there. A 2km trail through heaths, meadows, ponds, and bogs allows visitors to discover the site, its history, and its biodiversity.



## My eco-friendly restaurant

Grand Châtellerault is committed to producing healthy, high-quality, and environmentally friendly cuisine for its school catering unit. This includes developing short supply chains, increasing the proportion of organic products, purchasing products or services from sheltered workshops (ESAT, CAT, etc.), and continuing to supply a school meal price adapted to the income of families. These are just some of the 13 commitments made by the community.





# A PLACE TO INNOVATE



# Grand Châtelleraut, helps you bring **YOUR PROJECTS** to life



Here



**1<sup>st</sup>**  
**industrial basin**  
**of Nouvelle-Aquitaine\***  
 (\* in terms of employment)



**17**  
**business parks**



**500 ha**  
**of available land**  
 (parcels ranging from 500 sqm to 5<sup>ha</sup>, which can be redivided)

Here, audacity and curiosity are combined to build a bright future. Grand Châtelleraut places great emphasis on small and medium-sized enterprises (SMEs) and industries (SMIs) that drive the region's economy by imagining, inventing and innovating. As the second-largest industrial basin in Nouvelle-Aquitaine, the region also hosts internationally renowned groups and benefits from an extensive network of subcontractors.



# ” Pépinière René Monory

A BUSINESS INCUBATOR

Located in very high energy performance 2,000 sqm buildings, the René Monory business incubator offers tailored support and shared services to create, develop, and sustain your business.



8 workshop modules of 200 sqm each with offices, changing rooms and toilets



12 and 22 sqm offices



Meeting room and cafeteria



Shared reception, telephone answering, photocopying and mail services



## THINKING OF SETTING UP YOUR BUSINESS IN GRAND CHÂTELLERAULT ?

A dedicated service will guide you every step of the way from your choice of location to the greeting of your collaborators.

Contact us

**0033 (0)549 20 20 12**

[bienvenue@grand-chatellerault.fr](mailto:bienvenue@grand-chatellerault.fr)

## They chose Grand Châtellerault

THALES

arco

AIGLE

CRITT  
SPORT  
LOISIRS

LA ROCHE-POSAY  
LABORATOIRE DERMATOLOGIQUE

HUTCHINSON®

Aseptence  
Group

FENWICK

MARELLI

MAGG

DVTA  
TRANSPORT

CRVO

Emil Frey

Emil Frey France

CARAMBAR & CO

PLAXTIL

essity

DANISCO

Valeo

SAFRAN





# Environmental impact : Business commitment

Alongside the community and residents, companies located in Grand Châtellerault are also committed to reducing their environmental impact.

As a result, an industrial and territorial ecology approach is increasingly mobilising local economic stakeholders, fully aware of the crucial role they have to play in trying to optimise and/or improve the flows (materials, energy, people, etc.) they employ and generate.

A waste reduction programme, for example, has been launched. Led by an expert over 20 months, it provides businesses with comprehensive technical support. The objective is to improve their purchasing, processes, and operations to reduce their waste production and resource consumption in order to optimise their costs.



## Social and solidarity economy : a real boost for employment

A real boost for job creation, inclusion, and economic development, the social and solidarity economy brings together businesses, cooperative enterprises, mutual organisations, and employing associations.

**246** employing establishments

**2 595** employees

**10%** of employment on the territory



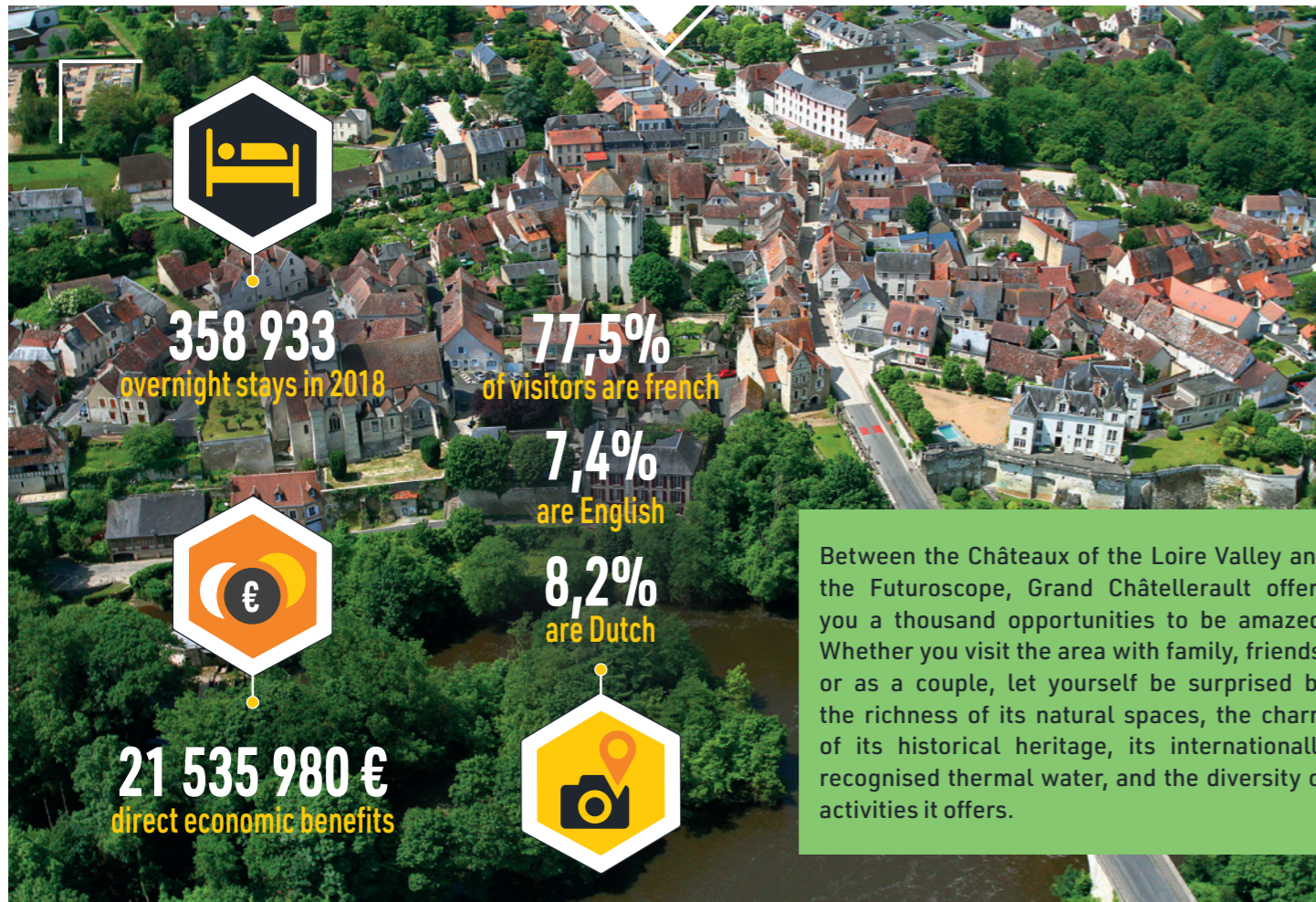
## A place for everyone

Grand Châtellerault offers a place for everyone, at all stages of life, regardless of the difficulties they may encounter. Whether it is returning to employment, securing career paths, training, or integration programs, the community supports the most vulnerable through tailored programmes, carried out by complementary structures, which cover the territory, as close as possible to the needs.





# A PLACE TO EXPLORE



Between the Châteaux of the Loire Valley and the Futuroscope, Grand Châtelleraut offers you a thousand opportunities to be amazed. Whether you visit the area with family, friends, or as a couple, let yourself be surprised by the richness of its natural spaces, the charm of its historical heritage, its internationally recognised thermal water, and the diversity of activities it offers.

# Art, history, heritage and well-being, take the time to discover Grand Châtelleraut

VILLES & PAYS D'ART & D'HISTOIRE



# ” Not to be missed



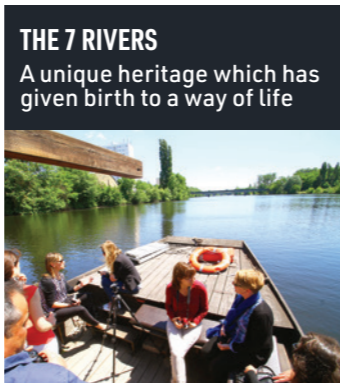
## LA MANUFACTURE

A former industrial site which has become the heart of culture, sports, and leisure activities



## THE TOWER-FORTRESS OF MONTHOIRON

The only known architectural construction created by Leonardo da Vinci



## THE 7 RIVERS

A unique heritage which has given birth to a way of life



## ANGLES-SUR-L'ANGLIN

A valley carved over time, a village listed as one of the most beautiful villages of France.



## LE CHÂTEAU DES ORMES

An exceptional venue, suitable for visits, receptions, and cultural events



## LA ROCHE-POSAY

An internationally renowned thermal water source of well-being



## TWO STATE-OWNED FORESTS

Natural spaces ideal for walks and outdoor sports



## THÉÂTRE BLOSSAC

One of the few Italian style theatres still remaining in France



# GRAND CHÂTELLERAULT

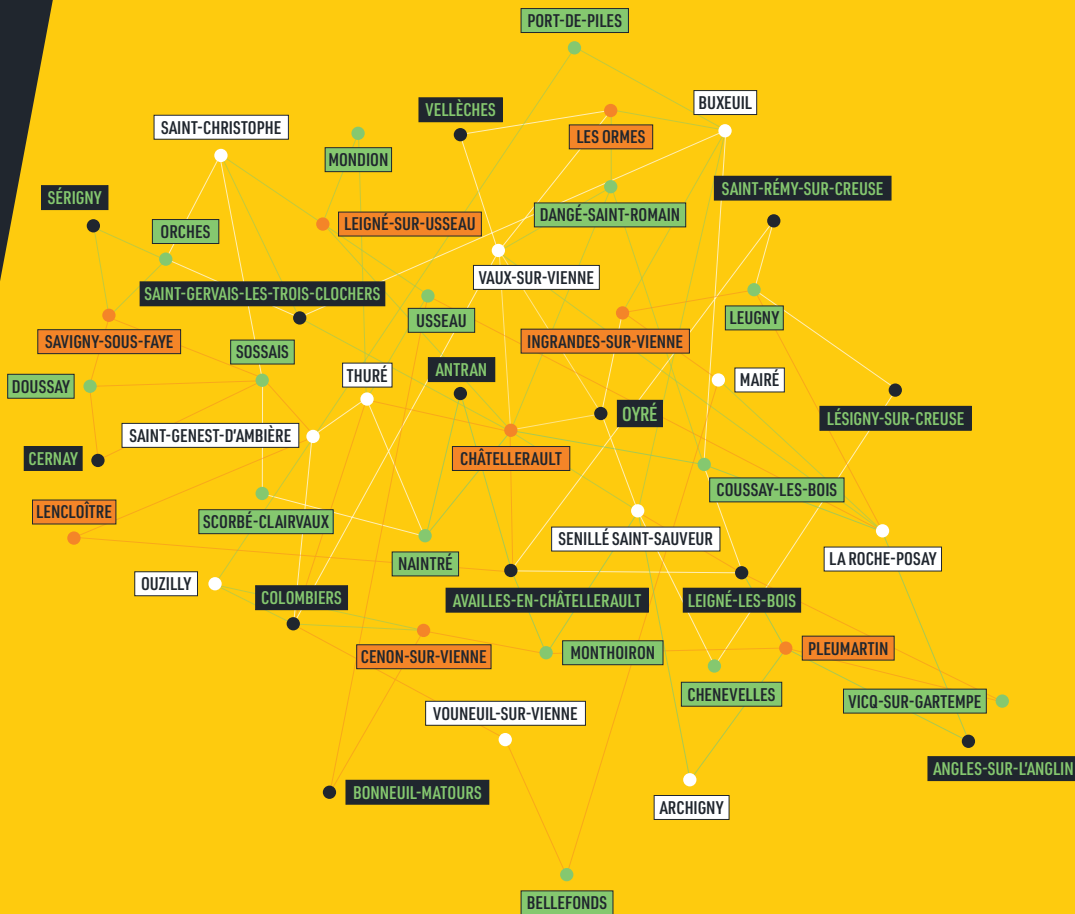
COMMUNAUTÉ  
D'AGGLOMÉRATION



Anything you would like  
TO TELL US ?

0033 (0)549 20 20 12

bienvenue@grand-chatellerault.fr



[developpement.grand-chatellerault.fr](http://developpement.grand-chatellerault.fr)